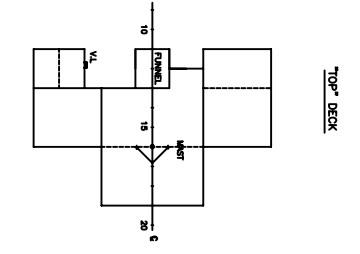
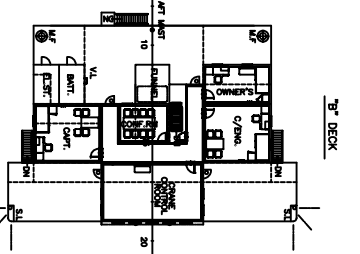
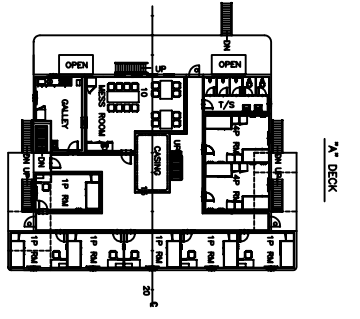
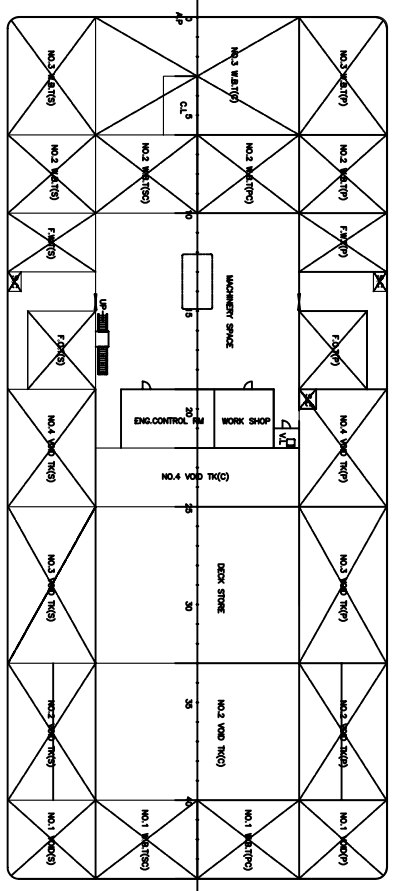


PART	EQUIPMENT	CAPACITY	UNIT WEIGHT	QTY
GENERATOR	MAIN GENERATOR	500KW	15.0	2
GENERATOR	AUX. GENERATOR	100KW	15.0	1
WINCH	MAIN HOOK	300 TON LIFT	4.0	4
WINCH	BOOM LIFTING WINCH	30/20/15/10/TON WMT 2.5, 4	12.0	4
WINCH	BOOM LIFTING WINCH	30/20/15/10/TON WMT 1.2	12.0	2
WINCH	ANCHOR WINCH	20/20/10/7/5/TON WMT 1.2	5.0	2
WINCH	WORK WINCH	5/5/2.5/1.5/TON WMT 1.2	2.5	4
WINCH	GEN. WINCH	5/5/2.5/1.5/TON WMT 1.2	2.5	2
WINCH	GEN. WINCH	18/18/12/8/TON WMT 1.2	7.0	1
WINCH	WINCH(S/ST)	20/20/10/7/5/TON WMT 2.5	7.0	1
WINCH	WINCH(S/ST)	300 TON W/HOOK x 20M	7.0	2
WINCH	BULLST. PUMP			
WINCH	BULLST. SYSTEM			

PRINCIPAL DIMENSION

LENGTH O.A.	66.00 M
LENGTH W.L.	66.00 M
LENGTH REG.	63.36 M
BREADTH(MLD)	29.00 M
DEPTH(MLD)	4.80 M
DRAFT(DLWL)	3.20 M
DRAFT(SCANTLING)	3.30 M
FRAME SPACE	1500 MM
DECK CAMBER	300 MM
COMPLEMENTS	16 P
BOOM ANGLE	65.0 DEG. - NORMAL LIFTING
MAIN HOOK	(300 TON x 4 SETS)
LIFTING CAPACITY	700.0 TON



OWNER :	DNE HA CO., LTD.	BILL. NO. :	OST-1301
APP. BY :		PROJ. NO. :	
SUBJECT : LIFTING CAPACITY 700TON CRANE BARGE			
APP. BY :		GENERAL ARRANGEMENT	
CHK. BY :			
SCALE :	1/200	DATE :	2012.12.08
DRW. BY :		CHK. BY :	
BUILDER : GEOSUNG HEAVY INDUSTRIES CO., LTD.			
DESIGNER : EMC TAJU MARINE CONSULTANTS CO., LTD.			
MARINE ENGINEERING & CONSULTANT SERVICE			